



**Government of India  
Ministry of Earth Sciences  
India Meteorological Department**



**Press Release**

**Date: 04<sup>th</sup> August, 2025**

**Time of Issue: 1330 hours IST**

**Subject: i) Heavy to very heavy rainfall likely to continue over Himachal Pradesh, Uttarakhand, Uttar Pradesh during next 3 days with isolated extremely heavy falls over Uttarakhand and Uttar Pradesh today, the 04<sup>th</sup> August.**  
**ii) Heavy to very heavy rainfall likely over Tamil Nadu & Kerala during next 5 days with isolated extremely heavy falls over Kerala and Ghat areas of Tamil Nadu on 05<sup>th</sup> and 6<sup>th</sup> August.**  
**iii) Heavy to very heavy rainfall likely to continue over Northeast & adjoining East India during next 7 days.**

**Realised weather during past 24 hours till 0830 hours IST of today, the 04<sup>th</sup> August, 2025:**

- ❖ **Heavy to very heavy rainfall with extremely heavy falls ( $\geq 21$  cm)** has been recorded at isolated places over Bihar and Meghalaya.
- ❖ **Heavy to very heavy rainfall (7-20 cm)** has been recorded at isolated places over Uttarakhand, Uttar Pradesh, East Madhya Pradesh, Kerala; **Heavy rainfall (7-11 cm)** at isolated places over Tamil Nadu, Coastal Andhra Pradesh, Telangana, Rayalaseema, South Interior Karnataka, Odisha, West Bengal, Himachal Pradesh, north Haryana, Chhattisgarh, Arunachal Pradesh, Assam and Mizoram.

**For more details of realised weather, kindly refer [Annexure I](#).**

**i. Weather Systems, Forecast and Warnings (refer to [Annexure II & III](#)):**

- ❖ The monsoon trough at mean sea level runs near the foothills of the Himalayas.
- ❖ An upper air cyclonic circulation lies over Himachal Pradesh & neighbourhood in lower tropospheric levels.
- ❖ A **Western Disturbance** seen as a cyclonic circulation over Himachal Pradesh and adjoining Jammu Division at 5.8 km above mean sea level.
- ❖ A **trough** runs from northwest Uttar Pradesh to northeast Bihar across east Uttar Pradesh in lower tropospheric levels.
- ❖ An **upper air cyclonic circulation** lies over southwest Bay of Bengal off North Tamil Nadu coast in lower & middle tropospheric levels tilting southward with height.
- ❖ An east-west **trough** runs roughly along Lat. 12°N from southern parts of eastcentral Arabian Sea to southern parts of central Bay of Bengal across south Interior Karnataka & Tamil Nadu in lower & middle tropospheric levels.
- ❖ An upper cyclonic circulation is likely to form over south Bangladesh & neighbourhood around 08<sup>th</sup> August, 2025.

Under the influence of these systems, the following weather is likely:

**Northwest India:**

- ❖ **Extremely heavy rainfall very likely at isolated places over Uttar Pradesh and Uttarakhand on 04<sup>th</sup> August.**
- ❖ Isolated **heavy rainfall** likely over Uttarakhand during 04<sup>th</sup>-10<sup>th</sup>; Himachal Pradesh during 04<sup>th</sup>-08<sup>th</sup>; Jammu-Kashmir, Punjab on 04<sup>th</sup> & 05<sup>th</sup>; Haryana, West Uttar Pradesh during 04<sup>th</sup>-06<sup>th</sup>; East Uttar Pradesh on 04<sup>th</sup> & 05<sup>th</sup> August with **very heavy rainfall** over Himachal Pradesh on 04<sup>th</sup> & 05<sup>th</sup>; Uttarakhand, Haryana, Uttar Pradesh on 05<sup>th</sup> August.
- ❖ Light/moderate rainfall at many places accompanied with thunderstorm & lightning likely over Western Himalayan region and many/some places over the plains during next 7 days.

### East & Central India:

- ❖ Isolated **heavy rainfall** likely over Sub-Himalayan West Bengal & Sikkim, Bihar during 04<sup>th</sup>-9<sup>th</sup>; Odisha on 06<sup>th</sup> & 07<sup>th</sup>; Gangetic West Bengal on 04<sup>th</sup>, 06<sup>th</sup> & 07<sup>th</sup>, Jharkhand on 07<sup>th</sup> & 08<sup>th</sup>; northwest Madhya Pradesh on 04<sup>th</sup> & 05<sup>th</sup>, East Madhya Pradesh on 04<sup>th</sup> and Chhattisgarh during 08<sup>th</sup>-10<sup>th</sup> August **with isolated very heavy rainfall over Bihar on 04<sup>th</sup> & 05<sup>th</sup>; Sub-Himalayan West Bengal & Sikkim on 04<sup>th</sup> & 07<sup>th</sup> August.**
- ❖ Light to moderate rainfall at most/many places accompanied with thunderstorm & lightning likely over the region during next 5 days.

### Northeast India:

- ❖ Light/moderate rainfall at many places accompanied with thunderstorm, lightning and isolated **heavy rainfall** likely to continue over Arunachal Pradesh, Assam & Meghalaya during 04<sup>th</sup>-10<sup>th</sup>; Nagaland, Manipur, Mizoram & Tripura during 04<sup>th</sup>-08<sup>th</sup> August with isolated **very heavy rainfall over Arunachal Pradesh on 04<sup>th</sup> & during 07<sup>th</sup>-10<sup>th</sup> August; Assam & Meghalaya on 04<sup>th</sup>, 07<sup>th</sup> & 08<sup>th</sup> August.**

### South Peninsular India:

- ❖ **Extremely heavy rainfall very likely at isolated places over Kerala and Ghat areas of Tamil Nadu on 05<sup>th</sup> & 06<sup>th</sup> August.**
- ❖ Isolated **heavy rainfall** likely over Tamil Nadu, Kerala & Mahe, Coastal & South Interior Karnataka during 04<sup>th</sup>-08<sup>th</sup>; Lakshadweep during 04<sup>th</sup>-06<sup>th</sup>; North Interior Karnataka during 06<sup>th</sup>-08<sup>th</sup>; Coastal Andhra Pradesh & Yanam during 04<sup>th</sup>-07<sup>th</sup>; Rayalaseema during 04<sup>th</sup>-10<sup>th</sup> August with **very heavy rainfall** over Tamil Nadu, Kerala on 04<sup>th</sup> & 07<sup>th</sup>; Coastal & South Interior Karnataka during 04<sup>th</sup>-06<sup>th</sup>; Rayalaseema on 05<sup>th</sup> August.
- ❖ Strong surface winds (speed reaching 40-50 kmph) very likely over South Peninsular India during next 3 days.
- ❖ Light to moderate rainfall at some/many places accompanied with thunderstorm & lightning likely over Tamil Nadu, Kerala & Mahe, Lakshadweep, Karnataka, Rayalaseema, Coastal Andhra Pradesh & Yanam and Telangana during next 5 days.

### West India:

- ❖ Isolated **heavy rainfall** likely over Marathwada on 06<sup>th</sup> & 07<sup>th</sup>; Konkan & Goa on 07<sup>th</sup> & 08<sup>th</sup> and Madhya Maharashtra on 08<sup>th</sup> August.
- ❖ Light to moderate rainfall at many/some places very likely over the region during next 5-6 days.

### Fishermen warning:

**Fishermen are advised to avoid venturing into the following from 04<sup>th</sup> August to 09<sup>th</sup> August 2025 to the following Areas:**

**Arabian Sea:** Along and off Kerala, Karnataka coast Lakshadweep area, Comorin & Maldives and adjoining sea areas during 04<sup>th</sup> August to 08<sup>th</sup> August; few parts of southeast Arabian Sea on 05<sup>th</sup> August, some parts of southwest & many parts of westcentral Arabian Sea along and off the Somalia coast and adjoining sea areas during 04<sup>th</sup> to 09<sup>th</sup> August, south Oman & adjoining sea areas on 5<sup>th</sup>, 7<sup>th</sup> and 8<sup>th</sup> August.

**Bay of Bengal:** Many parts of southwest Bay of Bengal, Gulf of Mannar during 04<sup>th</sup> to 09<sup>th</sup> August; & few parts of southeast Bay of Bengal on 6<sup>th</sup> August.

### ii. Weather conditions and forecast over Delhi/NCR during 04<sup>th</sup> to 07<sup>th</sup> August, 2025 (Annexure IV)

**For more details, kindly refer National Weather Bulletin:**

[https://mausam.imd.gov.in/responsive/all\\_india\\_forecast\\_bulletin.php](https://mausam.imd.gov.in/responsive/all_india_forecast_bulletin.php)

**For District wise warnings refer:** <https://mausam.imd.gov.in/responsive/districtWiseWarningGIS.php>

**For Fishermen warning refer** <https://rsmcnewdelhi.imd.gov.in/fishermen-warning.php>

**Rainfall recorded (in cm) during past 24 hours till 0830 hours IST of today, the 04<sup>th</sup> August:**

**Bihar:** Purnea (dist Purnea) 27, Hayaghat (dist Darbhanga) 16, Runnisaidpur (dist Sitamarhi) 14, Sheohar (dist Sheohar) 13, Bettiah (dist West Champaran) 13, Purnahia (dist Sheohar) 12, Dhengbridge (dist Sitamarhi) 12, Sikta (dist West Champaran) 12, Piprahi (dist Sheohar) 12, Dhaka (dist East Champaran) 11, Warisnagar (dist Samastipur) 11, Chatia (dist East Champaran) 11, Bhagwanpur (dist Vaishali) 11, Kursela (dist Katihar) 11, Bhagwanpur Hat (dist Siwan) 11, Rosera (dist Samastipur) 10, Basantpur (dist Siwan) 10, Mahua (dist Vaishali) 9, Goriakothi (dist Siwan) 9, Bairstania (dist Sitamarhi) 9, Katihar (dist Katihar) 9, Chehara Kala (dist Vaishali) 9, Krityanand Nagar (dist Purnea) 9, Danapur (dist Patna) 9, Areraj (dist East Champaran) 9, Harsidhi (dist East Champaran) 9, Kalyanpur (dist Samastipur) 9, Banmankhi (dist Purnea) 9, Khanpur (dist Samastipur) 9, Kurhani (dist Muzaffarpur) 9, Korha (dist Katihar) 8, Samastipur (dist Samastipur) 8, Kusheswarstan (dist Darbhanga) 8, Patepur (dist Vaishali) 8, Goraul/doli (dist Vaishali) 8, Bandra (dist Muzaffarpur) 8, Thakurganj (dist Kishanganj) 7, Adapur (dist East Champaran) 7, Ujiarpur (dist Samastipur) 7, Sampatchak (dist Patna) 7, Sangrampur (dist East Champaran) 7, Alalnagar (dist Madhepura) 7, Dhengraghat (dist Purnea) 7, Jalalgarh (dist Purnea) 7, Kalyanpur (dist East Champaran) 7, Khaira (dist Jamui) 7, Naubatpur (dist Patna) 7, Kishanganj (dist Kishanganj) 7, Sugauli (dist East Champaran) 7, Kasba (dist Purnea) 7, Hajipur (dist Vaishali) 7, Sonbarsa (dist Saharsa) 7, Lakri Nabiganj (dist Siwan) 7, Srinagar (dist Purnea) 7, Bihta (dist Patna) 7, Parsa (dist Saran) 7, Chakia (dist East Champaran) 7,

**Assam & Meghalaya:** Cherrapunji (dist East Khasi Hills) 20; Cherrapunji(rkm) (dist East Khasi Hills) 17; Bhaghmara (dist South Garo Hills) 15; Shella (dist East Khasi Hills) 13; Karimganj (dist Sribhumi), Mawsynram (dist East Khasi Hills), Williamnagar (dist East Garo Hills) 11 Each; Kajolgaon AWS (dist Chirang) 9; Mawphlang (dist East Khasi Hills) 8; Mawkyrwat (dist South West Khasi Hills), Dhekiajuli ARG (dist Sonitpur), Dhekiajuli (dist Sonitpur) 7 Each;

**East Uttar Pradesh:** Rae Bareilly CWC (dist Rae Bareilly) 20; Ayodhya (dist Ayodhya) 15; Ram Sanahi Ghat Tehsil (dist Barabanki) 14; Mahsi (dist Bahraich), Uska Bazar Fmo (dist Siddharth Nagar) 11 Each; Fursatganj (dist Amethi), Tanda (dist Ambedkar Nagar), Muhammadi (dist Kheri), Kakardharighat (dist Shrawasti), Neemsar (dist Sitapur), Manikpur (dist Chitrakoot) 10 Each; Mukhlispur (dist Sant Kabir Nagar), Colonialganj (dist Gonda), Haidargarh (dist Barabanki), Trimohani Ghat Fmo (dist Maharajganj), Mohammedabad ( Y ) (dist Ghazipur), Sandila (dist Hardoi), Hata (dist Kushi Nagar), Lucknow ( Ap ) (dist Lucknow), Malihabad (dist Lucknow), Patti (dist Pratapgarh), Bhatpurwaghat (dist Sitapur) 9 Each; Bhanpur (dist Basti), Lalganj Aara (dist Pratapgarh), Kaiserganj (dist Bahraich), Mankapur (dist Gonda), Chanderdeepghat (dist Gorakhpur), Kunda (dist Pratapgarh), Rajapur (dist Chitrakoot) 8 Each; Lucknow (hs) (dist Lucknow), Lucknow ( Cr ) (dist Lucknow), Nawabganj Tehsil (dist Barabanki), Rudhauli (dist Basti), Lambhuuaa (dist Sultanpur), Turtipar (dist Ballia), Balrampur (dist Balrampur), Bara Banki (dist Barabanki), Ayodhya (ag) (dist Ayodhya), Jaunpur CWC (dist Jaunpur), Kanpur IAF (dist Kanpur City) 7 Each;

**West Uttar Pradesh:** Budaun (dist Badaun) 19; Sahaswan (dist Badaun) 13; Gunnaur (dist Sambhal), Moradabad CWC (dist Moradabad), Sambhal (dist Sambhal) 12 Each; Saharanpur (dist Saharanpur) 11; Bijnor (dist Bijnor), Dhampur (dist Bijnor), Moradabad (dist Moradabad) 10 Each; Chandpur (dist Bijnor), Bareilly PBO (dist Bareilly), Bilari (dist Moradabad) 9 Each; Moradabad (dist Moradabad), Jansath (dist Muzaffarnagar), Dataganj (dist Badaun), Najibabad (t) (dist Bijnor), Amroha (dist Amroha) 8 Each; Bisauli (dist Badaun), Anupshahr (dist Bulandshahar), Narora (dist Bulandshahar), Hasanpur (dist Amroha) 7 Each;

**Uttarakhand:** Kotdwara (dist Garhwal Pauri) 17; Sama (dist Bageshwar), Loharkhet (dist Bageshwar) 14 Each; Haldwani (dist Nainital) 13; Narendranagar (dist Garhwal Tehri) 11; Hardwar (dist Hardwar) 10; Chamoli (dist Chamoli), Rishikesh (dist Dehradun) 9 Each; Landsdown (dist Garhwal Pauri), Dehra Dun (dist Dehradun) 8 Each; Munsiyari (dist Pithoragarh), Bhagwanpur (dist Hardwar), Didihat (dist Pithoragarh) 7 Each;

**East Madhya Pradesh:** Teonthar (dist Rewa) 13; Singrauli-aws (dist Singrauli) 7;

**Kerala & Mahe:** Thodupuzha (dist Idukki) 13; Athirappalli AWS (dist Thrissur) 12; Kanjirappally (dist Kottayam) 10; Udumbannoor AWS (dist Idukki) 9; Mangalam Dam AWS (dist Palakkad) 8; Vytiri (dist Wynad), Parumbikulam (dist Palakkad), Ranni AWS (dist Pathanamthitta), Palode AWS (dist Thiruvananthapuram), Kuppadi AWS (dist Wynad) 7 Each;

**Telangana:** Gudurwrgl (dist Mahabubabad) 11; Narsampet (dist Warangal), Yellandu (dist B. Kothagudem) 9 Each; Kusumanchi (dist Khammam) 8; Chennaraopet (dist Warangal), Choutuppall(ARG) (dist Y. Bhuvanagiri) 7 Each;

**Chhattisgarh:** Balrampur (dist Balrampur), Kusmi (dist Balrampur) 11 Each;

**Coastal Andhra Pradesh & Yanam:** Seethanagaram (dist Parvathipuram Manyam) 10;

**Odisha:** Rajkanika (dist Kendrapara), Aul (dist Kendrapara) 10 Each;

**Gangetic West Bengal:** Kalyani Smo (dist Nadia), Contai (dist East Midnapore) 10 Each;

**Arunachal Pradesh:** Roing (dist Lower Dibang Valley) 9;

**South Interior Karnataka:** Rayalpadu (dist Kolar) 9; Agumbe AWS (dist Shivamogga) 7;

**Himachal Pradesh:** Kasauli (dist Solan) 8;

**Haryana-Chandigarh-Delhi:** Jagadhari (dist Yamuna Nagar), Morni (dist Panchkula) 8 Each; Saraswati Nagar (dist Yamuna Nagar) 7;

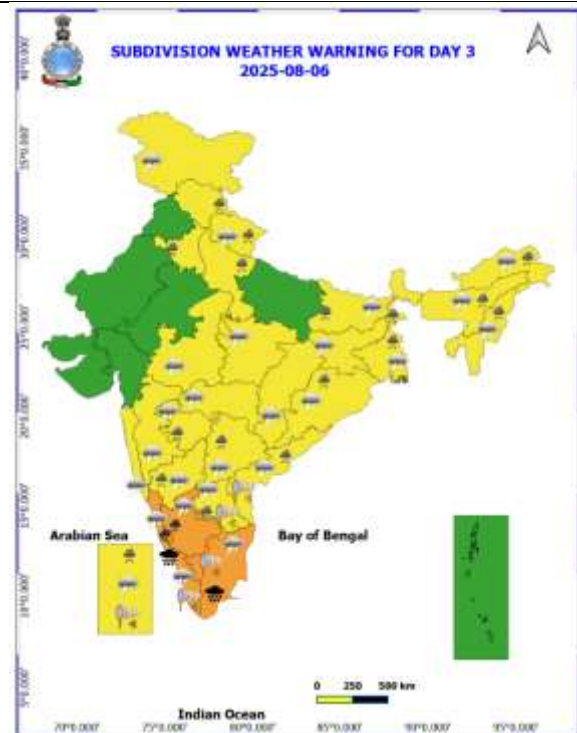
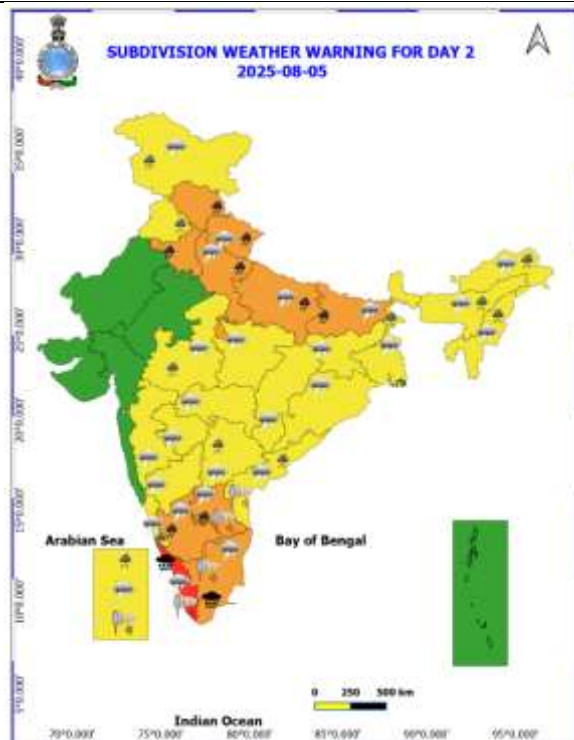
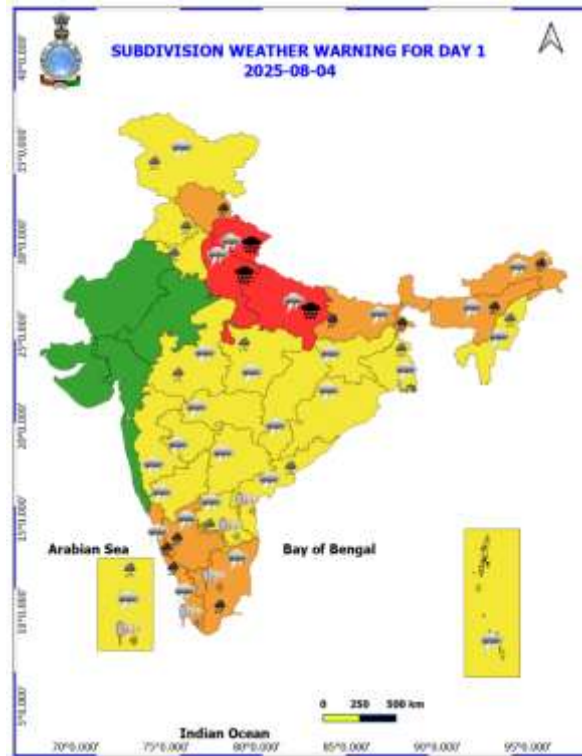
**Sub Himalayan West Bengal & Sikkim:** Mathabhanga (dist Cooch Behar), Mekhliganj (dist Cooch Behar) 8 Each;

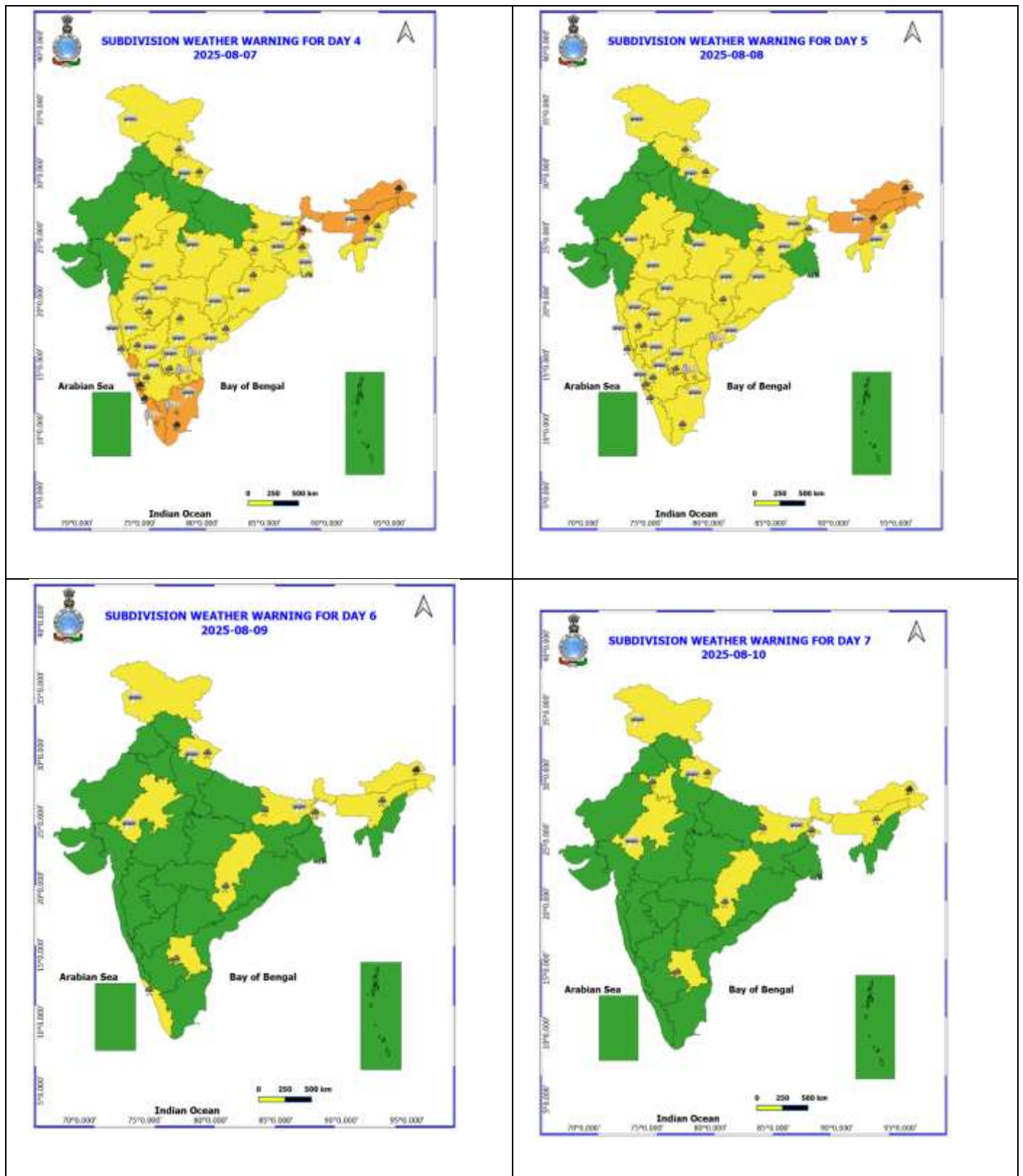
**Tamil Nadu, Puducherry & Karaikal:** Tambaram (dist Chengalpattu) 7.

Table-1								
7 Days Rainfall Forecast								
S.No.	Subdivision	4- Aug	5- Aug	6- Aug	7- Aug	8- Aug	9- Aug	10- Aug
		Day 1	Day 2	Day 3	Day 4	Day 5	Day 6	Day 7
1	ANDAMAN & NICOBAR ISLANDS	SCT	WFS	WFS	WFS	WFS	WFS	FWS
2	ARUNACHAL PRADESH	FWS	FWS	FWS	WFS	WFS	WFS	WFS
3	ASSAM & MEHGHALAYA	WFS	FWS	FWS	WFS	WFS	WFS	WFS
4	NAGALAND, MANIPUR, MIZORAM AND TRIPURA	WFS	FWS	FWS	WFS	FWS	FWS	FWS
5	SUB HIMALAYAN WEST BENGAL & SIKKIM	WFS	WFS	WFS	WFS	WFS	WFS	WFS
6	GANGETIC WEST BENGAL	WFS	FWS	WFS	WFS	WFS	FWS	FWS
7	ODISHA	SCT	SCT	FWS	WFS	WFS	SCT	SCT
8	JHARKHAND	SCT	SCT	FWS	FWS	FWS	FWS	FWS
9	BIHAR	WFS	FWS	SCT	SCT	FWS	FWS	FWS
10	EAST UTTAR PRADESH	WFS	FWS	SCT	SCT	FWS	FWS	SCT
11	WEST UTTAR PRADESH	WFS	WFS	FWS	SCT	SCT	FWS	FWS
12	UTTARAKHAND	WFS	WFS	FWS	FWS	FWS	FWS	FWS
13	HARYANA, CHANDIGARH & DELHI	SCT	FWS	FWS	ISOL	SCT	SCT	FWS
14	PUNJAB	SCT	FWS	SCT	ISOL	SCT	SCT	SCT
15	HIMACHAL PRADESH	WFS	WFS	FWS	FWS	FWS	FWS	FWS
16	JAMMU AND KASHMIR AND LADAKH	SCT	WFS	FWS	SCT	SCT	SCT	FWS
17	WEST RAJASTHAN	DRY	DRY	ISOL	ISOL	ISOL	ISOL	ISOL
18	EAST RAJASTHAN	ISOL	ISOL	ISOL	ISOL	SCT	SCT	SCT
19	WEST MADHYA PRADESH	SCT	SCT	SCT	SCT	FWS	FWS	SCT
20	EAST MADHYA PRADESH	FWS	FWS	SCT	SCT	FWS	FWS	FWS
21	GUJRAT REGION	FWS	FWS	FWS	FWS	FWS	SCT	SCT
22	SAURASHTRA & KUTCH	SCT	SCT	SCT	SCT	SCT	SCT	SCT
23	KONKAN & GOA	FWS	FWS	WFS	WFS	WFS	WFS	WFS
24	MADHYA MAHARASHTRA	ISOL	ISOL	SCT	FWS	SCT	SCT	SCT
25	MARATHWADA	ISOL	ISOL	FWS	FWS	FWS	SCT	ISOL
26	VIDARBHA	SCT	SCT	SCT	SCT	FWS	FWS	FWS
27	CHHATTISGARH	SCT	SCT	SCT	FWS	FWS	FWS	FWS
28	COASTAL ANDHRA PRADESH	SCT	FWS	FWS	FWS	SCT	SCT	SCT
29	TELANGANA	SCT	FWS	FWS	FWS	FWS	FWS	FWS
30	RAYALASEEMA	SCT	FWS	FWS	FWS	FWS	FWS	FWS
31	TAMILNADU & PUDUCHERRY	SCT	SCT	FWS	FWS	SCT	SCT	ISOL
32	COSTAL KARNATAKA	WFS	WFS	WFS	WFS	WFS	WFS	FWS
33	NORTH INTERIOR KARNATAKA	SCT	FWS	WFS	WFS	WFS	FWS	FWS
34	SOUTH INTERIOR KARNATAKA	WFS	WFS	WFS	WFS	WFS	FWS	FWS
35	KERALA AND MAHE	WFS	WFS	WFS	WFS	WFS	WFS	WFS
36	LAKSHADWEEP	WFS	WFS	WFS	WFS	WFS	WFS	WFS

- As the lead period increases forecast accuracy decrease.







- Action may be taken based on ORANGE AND REDCOLOUR warnings.
- Vulnerable regions likely urban and hilly areas action may be initiated for heavy rainfall warning.
- As the lead period increases forecast accuracy decreases.

Detailed districtwise Multi Hazard weather warning for next five days available at <https://mausam.imd.gov.in/responsive/districtWiseWarningGIS.php>

**Weather forecast over Delhi/NCR during 04<sup>th</sup> to 07<sup>th</sup> August 2025****Past Weather:**

There has been rise in the minimum temperature up to 2 – 3°C and no significance change in maximum temperature over Delhi/NCR during the past 24 hours. The maximum and minimum temperatures over Delhi were around 33 to 34°C and 26 to 27°C respectively. The minimum and maximum temperatures were near normal. Partly cloudy sky conditions with predominant surface wind from the southwest direction with wind speeds up to 16 kmph prevailed during the past 24 hours. Generally cloudy sky conditions with a wind speed of less than 16 kmph from the southwest direction prevailed over the region in the forenoon today.

**Weather Forecast:**

**04.08.2025:** Generally cloudy sky. Possibility of development of thundery cloud during afternoon/evening. The maximum temperatures over Delhi are likely to be in the range of 32 to 34°C. The maximum temperature will be below normal up to 1 to 2 °C. The predominant surface wind will likely be from the southwest direction with a wind speed of 10-15 kmph in the afternoon. The wind speed will remain same to 10-15 kmph from the southeast direction during evening and night.

**05.08.2025:** Generally cloudy sky. A spell of very light to light rain during early hours to morning. Another one or two spells of light to moderate rain/thundershowers at many places during afternoon/evening. The maximum and minimum temperatures over Delhi are likely to be in the range of 31 to 33°C and 24 to 26°C respectively. The minimum temperature will be below normal up to 1 to 3°C and the maximum temperature will be below normal up to 1 to 3°C. The predominant surface wind will likely be from the southeast direction with a wind speed of upto 10-15 kmph during the morning hours. The wind speed will gradually increase becoming 12-18 kmph from the southeast direction in the afternoon. The wind speed will gradually decrease becoming 05-10 kmph from the southeast direction during the evening and night.

**06.08.2025:** Partly cloudy sky. Possibility of very light to light rain/thundershowers. The maximum and minimum temperatures over Delhi are likely to be in the range of 32 to 34°C and 24 to 26°C respectively. The minimum temperature will be below normal up to 1 to 3°C and the maximum temperature will be below normal upto 1-2°C. The predominant surface wind will likely be from the northeast direction with a wind speed of upto 05-10 kmph during the morning hours. The wind speed will gradually increase becoming 08-12 kmph from the northeast direction in the afternoon. The wind speed will gradually decrease becoming upto 05-10 kmph from the east direction during the evening and night.

**07.08.2025:** Partly cloudy sky. Possibility of very light rain/thundershowers. The maximum and minimum temperatures over Delhi are likely to be in the range of 33 to 35°C and 23 to 25°C respectively. The minimum temperature will be below normal up to 1 to 3°C and the maximum temperature will be near normal. The predominant surface wind will likely be from the southwest direction with a wind speed of 05-10 kmph during the morning hours. The wind speed will increase upto 10-15 kmph from the south direction in the afternoon. It will remain same 10-15 kmph from the southeast direction during the evening and night.

**Impact expected and Action Suggested due to light to moderate rainfall with thundershowers:**

- Be cautious and take precautionary measures, though there is the likelihood of thunderstorms/lightning.
- Damage to standing crops, Minor to major damage to power and communication lines due to breaking of branches, Partial damage to vulnerable structures due to strong winds, Loose objects may fly.
- People are advised to keep a watch on the weather for worsening conditions and be ready to move to safer places accordingly, stay indoors, close windows & doors and avoid travel if possible, take safe shelters; do not take shelter under trees, do not lie on concrete floors and do not lean against concrete walls, unplug electrical/ electronic appliances, immediately get out of water bodies, keep away from all the objects that conduct electricity.

### Impact & Action Suggested due to

- ✓ **Extremely heavy rainfall** very likely at isolated places over Uttar Pradesh and Uttarakhand on 04<sup>th</sup> and Kerala, ghat areas of Tamil Nadu on 05<sup>th</sup> & 06<sup>th</sup> August.
- ✓ Isolated **very heavy rainfall** over Bihar, Himachal Pradesh on 04<sup>th</sup> & 05<sup>th</sup>; Sub-Himalayan West Bengal & Sikkim on 04<sup>th</sup> & 07<sup>th</sup>; Uttarakhand, Haryana, Uttar Pradesh on 05<sup>th</sup>; Arunachal Pradesh on 04<sup>th</sup> & during 07<sup>th</sup>-10<sup>th</sup> August; Assam & Meghalaya on 04<sup>th</sup>, 07<sup>th</sup> & 08<sup>th</sup> August.

### Impact Expected

- Localized Flooding of roads, water logging in low lying areas and closure of underpasses mainly in urban areas of the above region.
- Occasional reduction in visibility due to heavy rainfall.
- Disruption of traffic in major cities due to water logging in roads leading to increased travel time.
- Minor damage to kutchha roads.
- Possibilities of damage to vulnerable structure.
- Localized Landslides/Mudslides/landslips/mudslips/landsinks/mudsinks.
- Damage to horticulture and standing crops in some areas due to inundation.
- It may lead to riverine flooding in some river catchments (for riverine flooding please visit Web page of CWC)

### Action Suggested

- Check for traffic congestion on your route before leaving for your destination.
- Follow any traffic advisories that are issued in this regard.
- Avoid going to areas that face the water logging problems often.
- Avoid staying in vulnerable structure.

### Agromet advisories for likely impact of Heavy / Heavy to Very Heavy / Extremely Heavy Rainfall

- In **Uttar Pradesh**, postpone sowing of pigeon pea, chilli, onion and planting of banana and papaya and make necessary arrangements for drainage of excess water from the fields in **Bundelkhand Zone**. Make proper arrangement for drainage in fields of autumn sugarcane, spring sugarcane, paddy, pigeon pea, maize, green gram, black gram and vegetables in **South Western Semi-Arid Zone** and pigeon pea, soybean, maize, groundnut, green gram, black gram and barnyard millet in **Eastern Plain Zone**.
- In **Uttarakhand**, to avoid waterlogging, maintain proper drainage channels in fields of rice, sugarcane, maize, black gram, green gram, soybean, and vegetables in **Bhabar and Tarai Zone** and barnyard millet, finger millet, green gram and black gram in **Sub Humid Sub Tropic Zone**. Postpone sowing of green gram and soybean in **Nainital** district. In **Hill Zone**, strengthen the bunds to prevent surface runoff of water. Postpone sowing of vegetable pea in case of excessive wet soil conditions. Maintain proper drainage channels in the crop fields.
- In **Himachal Pradesh**, cover the cauliflower nursery with plastic sheets to prevent damage from heavy rainfall in **High Hills Sub Temperate Wet Zone**. Make proper drainage channels in vegetable fields in **Mid Hills Sub Humid Zone**; rice, maize and vegetable fields in **Sub Montane and Low Hills Sub Tropical Zone** and kidney beans, finger millet, cucurbits and vegetables in **High Hills Sub Temperate Wet Zone**.
- In **Arunachal Pradesh**, postpone all fresh sowing operations till cessation of heavy rains. Avoid fresh transplanting of rice in lowlands during heavy rainfall. Cover rice fields with natural mulches like dry leaves or straw to avert the adverse impact of rain. Ensure proper drainage in rice, maize, finger millet, soybean and vegetables and fruit orchards to avoid waterlogging. Provide strong support to fruit-bearing plants to prevent them from bending or breaking during heavy rains.
- In **Assam**, postpone the sowing of sesame, green gram and pigeon pea till cessation of heavy rains in **Kokrajhar** and **Bongaigaon** districts. In **Central Brahmaputra Valley Zone**, harvest matured jute immediately and keep the bundles of harvested produce in high land or shed to avoid retting in contaminated water. Avoid sowing of sesame during heavy rainfall. To prevent waterlogging, ensure proper drainage in *Sali* rice, green gram and pigeon pea fields in **Lower Brahmaputra Valley Zone**; *Sali* rice, turmeric and already sown sesame fields in **Central Brahmaputra Valley Zone**; rice and sesame fields in **Hill Zone** and *Sali* rice fields in **North Bank Plain Zone**, **Upper Brahmaputra Valley Zone** and **Barak Valley Zone**.



- In **Meghalaya**, avoid transplanting of rice during heavy rainfall. Ensure proper drainage in rice, maize, turmeric, chilli, okra and bitter gourd fields to prevent waterlogging. Provide staking / support to tall and fragile crops like banana, papaya, bottle gourd etc. to prevent lodging.
- In **Sub-Himalayan West Bengal**, make provision to drain out excess water from rice, ginger, vegetable fields and fruit orchards in **Hill Zone** and *aman* paddy and vegetable fields in **Terai Zone**. Cover the chilli seedlings with plastic to protect them from heavy rains in **Terai Zone**.
- In **Bihar**, ensure proper drainage in maize, vegetables, ragi, kodo, sava, etc. in low-lying areas and strengthen field bunds in **South Bihar Alluvial Zone**. Maintain proper drainage in maize fields and do not allow rain water to accumulate in the fields of ragi, kodo, sava, china etc. in **North East Alluvial Zone**.
- In **Kerala**, provide adequate drainage in fields of rice, coconut, banana and ginger. Provide support to banana plantations. Make the vegetable pandals stronger.
- In **Tamil Nadu**, provide support to sugarcane and banana plants to prevent lodging. Provide proper drainage facility in rice nursery in **North Eastern Zone** and standing crop fields in **Cauvery Delta Zone**.
- In **Karnataka**, provide adequate drainage facilities in arecanut and banana plantations in **Coastal Zone**; fields of maize, cotton, ginger and plantations of arecanut in **Hill Zone** and arecanut and coconut plantations in **Southern Transition Zone**.

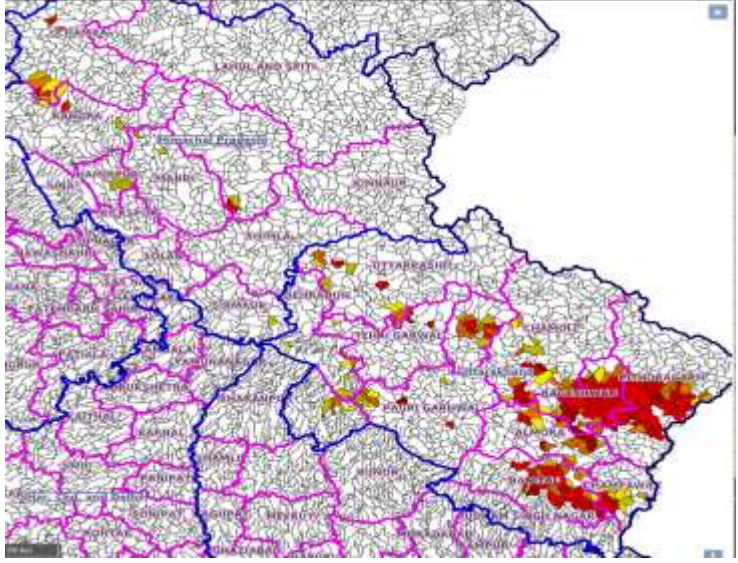
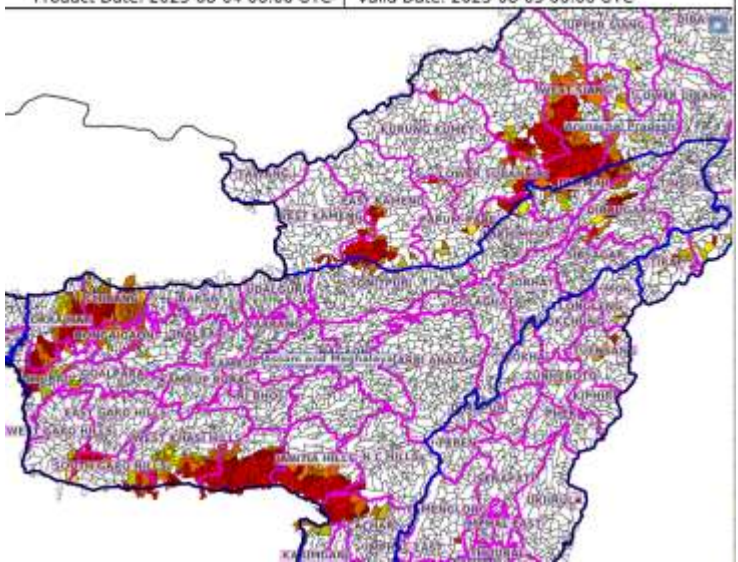
#### **Livestock / Fishery**

- Keep the animals inside the shed during heavy rainfall and provide them balanced feed.
- Store feed and fodder in a safe place to prevent spoilage.
- Construct an outlet with proper netting around the ponds to drain out excess water, thereby preventing fish from escaping in case of overflow.

#### **Agromet advisories for likely impact of Thunderstorm / Gusty Winds / Squally Winds**

- Provide mechanical support to horticultural crops and staking or support to vegetables and young fruit plants / fruit-bearing plants to avoid lodging due to strong winds.

## Flash flood guidance:

<p>24 hours Outlook for the Flash Flood Risk (FFR) till 1130 IST of 05-08-2025 :</p> <p>Low to Moderate flash flood risk likely over few watersheds &amp; neighbourhoods of following Met Sub-divisions during next 24 hours.</p> <p>Himachal Pradesh - Chamba, Hamirpur, Kangra, Kullu, Mandi and Sirmaur districts.</p> <p>Uttarakhand - Almora, Bageshwar, Chamoli, Champawat, Dehradun, Haridwar, Nanital, Pauri Garhwal, Pithoragarh, Rudrapur, Tehri Garhwal and Uttarkashi districts.</p> <p>Surface runoff/ Inundation may occur at some fully saturated soils &amp; low-lying areas over Area of Concern (AoC) as shown in map due to expected rainfall occurrence in next 24 hours.</p>	<p>Product: WRF FFR   Timescale: 24-hr   Region: "INDIA" Product Date: 2025-08-04 06:00 UTC   Valid Date: 2025-08-05 06:00 UTC</p> 
<p>24 hours Outlook for the Flash Flood Risk (FFR) till 1130 IST of 05-08-2025 :</p> <p>Low to Moderate flash flood risk likely over few watersheds &amp; neighbourhoods of following Met Sub-divisions during next 24 hours.</p> <p>Arunachal Pradesh - East Kameng, East Siang, Lower Subansiri, Upper Subansiri, Papum-Pare, Tirap, Changlang, West Kameng, West Siang, Upper Siang and Kurung Kumey districts.</p> <p>Assam &amp; Meghalaya - Barpeta, Bongaigaon, Cachar, Chirang, Dhemaji, Dibrugarh, Goalpara, Kokrajhar, Lakhimpur, N.C Hills, Sibsagar, Sonitpur, Karimganj, East Garo Hills, East Khasi Hills, South Garo Hills, West Garo Hills, West Khasi Hills, Dhubri and Jaintia Hills districts.</p> <p>Surface runoff/ Inundation may occur at some fully saturated soils &amp; low-lying areas over Area of Concern (AoC) as shown in map due to expected rainfall occurrence in next 24 hours.</p>	<p>Product: WRF FFR   Timescale: 24-hr   Region: "INDIA" Product Date: 2025-08-04 06:00 UTC   Valid Date: 2025-08-05 06:00 UTC</p> 

### **Legends & abbreviations:**

- ❖ **Heavy Rain:**64.5-115.5mm; **Very Heavy Rain:**115.6-204.4mm; **Extremely Heavy Rain:** >204.4mm.
- ❖ **Obsy:** Observatory; Automatic Weather Station; **ARG:** Automatic Rain Gauge; **dist:** District; **NH:** National Highway; **KVK:** Krishi Vigyan Kendra; **DVC:** Damodar Valley Corporation; **PTO:** Part Time Office, **Aero:** Aerodrome, **IAF:** Indian Air Force.
- ❖ **Region wise classification of meteorological Sub-Divisions:**
  - **Northwest India:** Western Himalayan Region (Jammu-Kashmir-Ladakh-Gilgit-Baltistan-Muzaffarabad, Himachal Pradesh and Uttarakhand); Punjab, Haryana-Chandigarh-Delhi; West Uttar Pradesh, East Uttar Pradesh, West Rajasthan and East Rajasthan.
  - **Central India:** West Madhya Pradesh, East Madhya Pradesh, Vidarbha and Chhattisgarh.
  - **East India:** Bihar, Jharkhand, Sub-Himalayan West Bengal & Sikkim; Gangetic West Bengal, Odisha and Andaman & Nicobar Islands.
  - **Northeast India:** Arunachal Pradesh, Assam & Meghalaya and Nagaland, Manipur, Mizoram & Tripura.
  - **West India:** Gujarat Region, Saurashtra & Kutch, Konkan & Goa, Madhya Maharashtra and Marathawada.
  - **South India:** Coastal Andhra Pradesh & Yanam, Telangana, Rayalaseema, Coastal Karnataka, North Interior Karnataka, South Interior Karnataka, Kerala & Mahe, Tamil Nadu, Puducherry & Karaikal and Lakshadweep.



## LEGENDS

1. अंडमान और निकोबार द्वीपसमूह

2. अरुणाचल प्रदेश

3. असम और मेघालय

4. नागालैंड, मणिपुर, मिजोरम और त्रिपुरा

5. उप-हिमालयी पश्चिम बंगाल और सिक्किम

6. गंगीय पश्चिम बंगाल

7. ओडिशा

8. झारखंड

9. बिहार

10. पूर्वी उत्तर प्रदेश

11. पश्चिम उत्तर प्रदेश

12. उत्तराखंड

13. हरियाणा, चंडीगढ़ और दिल्ली

14. पंजाब

15. हिमाचल प्रदेश

16. जम्मू और कश्मीर और लद्दाख

17. पश्चिम राजस्थान

18. पूर्वी राजस्थान

19. पश्चिम मध्य प्रदेश

20. पूर्वी मध्य प्रदेश

21. गुजरात

22. सौराष्ट्र

23. कोंकण और गोवा

24. मध्य महाराष्ट्र

25. मराठवाड़ा

26. विदर्भ

27. छत्तीसगढ़

28. तटीय आंध्र प्रदेश और यनम

29. तेलंगाना

30. रायलसीमा

31. तमिलनाडु, पुडुचेरी और कराईकल

32. तटीय कर्नाटक

33. आंतरिक उत्तरी कर्नाटक

34. आंतरिक दक्षिणी कर्नाटक

35. केरल और माहे

36. लक्षद्वीप



1. Andaman & Nicobar Islands

2. Arunachal Pradesh

3. Assam & Meghalaya

4. Nagaland, Manipur, Mizoram & Tripura

5. Sub-Himalayan West Bengal & Sikkim

6. Gangetic West Bengal

7. Odisha

8. Jharkhand

9. Bihar

10. East Uttar Pradesh

11. West Uttar Pradesh

12. Uttarakhand

13. Haryana, Chandigarh & Delhi

14. Punjab

15. Himachal Pradesh

16. Jammu & Kashmir and Ladakh

17. West Rajasthan

18. East Rajasthan

19. West Madhya Pradesh

20. East Madhya Pradesh

21. Gujarat

22. Saurashtra

23. Konkan & Goa

24. Madhya Maharashtra

25. Marathwada

26. Vidarbha

27. Chhattisgarh

28. Coastal Andhra Pradesh & Yanam

29. Telangana

30. Rayalaseema

31. Tamilnadu, Puducherry & Karaikal

32. Coastal Karnataka

33. North Interior Karnataka

34. South Interior Karnataka

35. Kerala & Mahe

36. Lakshadweep

## SPATIAL DISTRIBUTION (% of Stations reporting)

% Stations	Category	% Stations	Category
76-100	Widespread (WS/Most Places)	26-50	Scattered (SCT/A Few Places)
51-75	Fairly Widespread (FWS/Many Places)	1-25	Isolated (ISOL)



Fog



Heavy Snow



Cold Wave



Heavy Rain



Dust Storm



Cold Day



Very Heavy Rain



Heat Wave



Ground Frost



Extremely Heavy Rain



Warm Night



Thunder & Lightning



Hot Day



Hailstorm



Hot & Humid



Dust Raising Winds



Strong Surface Winds

### COLOUR CODED WARNING

No Warning (No Action)

Watch (Be Aware)

Alert (Be Prepared To Take Action)

Warning (Take Action)

### Probabilistic Forecast

Terms	Probability of Occurrence (%)
Unlikely	< 25
Likely	25 - 50
Very Likely	50 - 75
Most Likely	> 75

\* Red colour warning does not mean "Red Alert", Red colour warning means "Take Action".

Forecast and Warning for any day is valid from 0830 hours IST of day till 0830 hours IST of next day.

For more details, kindly visit <https://mausam.imd.gov.in> or contact: 011-2434-4599

(Service to the Nation since 1875)



### DEFINITION/CRITERIA

#### Rain/ Snow \*

Heavy: 64.5 to 115.5 mm/cm \*  
Very Heavy: 115.6 to 204.4 mm/cm \*  
Extremely Heavy: > 204.4 mm/cm \*

#### Heat Wave

When maximum temperature of a station reaches  $\geq 40^{\circ}\text{C}$  for plains and  $\geq 30^{\circ}\text{C}$  for hilly regions

(a) Based on Departure from normal

Heat Wave: Maximum Temperature Departure from normal  $4.5^{\circ}\text{C}$  to  $6.4^{\circ}\text{C}$ .

Severe Heat Wave: Maximum Temperature Departure from normal  $\geq 6.5^{\circ}\text{C}$

(b). Based on Actual maximum temperature

Heat Wave: When actual maximum temperature  $\geq 45^{\circ}\text{C}$ .

Severe Heat Wave: When actual maximum temperature  $\geq 47^{\circ}\text{C}$ .

(c). Criteria for heat wave for coastal stations

When maximum temperature departure is  $> 4.5^{\circ}\text{C}$  from normal. Heat Wave may be described provided maximum temperature  $\geq 37^{\circ}\text{C}$ .

#### Warm Night

When maximum temperature remains  $40^{\circ}\text{C}$

Warm Night: When minimum temperature departure  $4.5^{\circ}\text{C}$  to  $6.4^{\circ}\text{C}$ .

Severe Warm Night: When minimum temperature departure  $> 6.4^{\circ}\text{C}$ .

#### Cold Wave

When minimum temperature of a station  $\leq 10^{\circ}\text{C}$  for plains and  $\leq 0^{\circ}\text{C}$  for hilly regions.

(a). Based on departure

Cold Wave: Minimum Temperature Departure from normal  $-4.5^{\circ}\text{C}$  to  $-6.4^{\circ}\text{C}$ .

Severe Cold Wave: Minimum Temperature Departure from normal  $\leq -6.5^{\circ}\text{C}$

(b) Based on actual Minimum Temperature (for Plains only)

Cold Wave: When Minimum Temperature is  $\leq 4.0^{\circ}\text{C}$

Severe Cold Wave: When Minimum Temperature is  $\leq 2.0^{\circ}\text{C}$

(c) For Coastal Stations

When Minimum Temperature departure is  $\leq -4.5^{\circ}\text{C}$  & actual Minimum Temperature is  $\leq 15^{\circ}\text{C}$

#### Cold Day

When minimum temperature of a station  $\leq 10^{\circ}\text{C}$  for plains and  $\leq 0^{\circ}\text{C}$  for hilly regions

Based on departure

Cold Day: Maximum Temperature Departure from normal  $-4.5^{\circ}\text{C}$  to  $-6.4^{\circ}\text{C}$ .

Severe Cold Day: Maximum Temperature Departure from normal  $\leq -6.5^{\circ}\text{C}$

#### Fog

Phenomenon of small droplets suspended in air and the horizontal visibility  $< 1\text{km}$

Moderate Fog: When the visibility between 500-200 metres

Dense Fog: when the visibility between 50- 200 metres

Very Dense Fog: when the visibility  $< 50$  metres

#### Thunderstorm

Sudden electrical discharges manifested by a flash of light (Lightning) and a sharp rumbling sound (thunder)

#### Dust/Sand Storm

An ensemble of particles of dust or sand energetically lifted to great heights by a strong and turbulent wind.

#### Frost

Ice deposits on ground

Air temperature  $\leq 4^{\circ}\text{C}$  ( over Plains)

#### Squall

A strong wind that rises suddenly, lasts for atleast 1 minute.

Moderate: Wind speed 52-61 kmph

Severe: Wind speed 62-67 kmph

Very Severe: Wind speed  $> 67$  kmph

#### Sea State

Effect of various waves in the sea over specific area

Rough to very rough: Wind speed 41-62 kmph (22-33 knots) & Wave height 2.5-6 metre

High to very high: Wind speed 63-117 kmph ( 34-63 knots) & Wave height 6-14 metre

Phenomenal: Wind speed  $> 117$  kmph ( $> 63$  knots) & Wave height  $> 14$  metre

#### Cyclone

Cyclonic Storm: Wind speed 62-87 kmph (34-47 knots)

Severe Cyclonic Storm: Wind speed 88-117 kmph (48-63 knots)

Very Severe Cyclonic Storm: Wind speed 118-165 kmph (64 - 89 knots)

Extremely Severe Cyclonic Storm: Wind speed 166-220 kmph (90 -119 knots)

Super Cyclone Storm: Wind speed  $> 220$  kmph ( $> 119$  knots)

\* Red colour warning does not mean "Red Alert", Red colour warning means "Take Action".

Forecast and Warning for any day is valid from 0830 hours IST of day till 0830 hours IST of next day.

For more details, kindly visit <https://mausam.imd.gov.in> or contact: 011-2434-4599

(Service to the Nation since 1875)

**Hot and Humid:** When maximum temperatures remain  $3^{\circ}\text{C}$  above normal along with the above normal relative humidity.